



Maranatha Christian Schools

Formal Dance Dress Guidelines

Ladies Dresses

For ladies, dresses and attire that reflect modesty are required. Each year, the most difficult task for administrators is the determination of modesty for girls.

Traditional interpretations are often at odds with fashion and cultural trends. Each year, girls are turned away or asked to modify. This is easily avoidable if the following guidelines are observed:

- Formal attire should reflect more a formal family occasion (like a wedding) rather than a night on the town or at a dance club.
- Dresses that are too revealing, are skin tight or form-fitting (no body con), expose midriffs or cleavage, or are too short will not be admitted into the dance. Please ensure dresses adhere to length guidelines.
- Dresses with the appearance that they are too short in length may be measured by administration.
- Claims that a dress was worn at last year's Formal or at Homecoming, or comparisons to the dresses of other girls already admitted to the dance will not be entertained or discussed. (Claiming that "others were speeding" rarely works when pulled over by police.)

- Modesty is admittedly a subjective interpretation, but one which we have a duty to uphold. Girls should therefore err on the side of modesty and formality and not put school administrators in the difficult position of upholding school standards. Having been specifically forewarned, we expect nothing less than full cooperation from girls and their parents on this issue.
- Guidelines will be strictly enforced. Students, including guests, not in compliance with dress code will not be admitted to the dance and refunds will not be issued. There will NOT be a loaner clothing option.

□ Dress Specifics:

- Dress length should be no shorter than 4 inches from the knee.
- Dress backs may not be lower than the elbow.
- Dress must completely cover the sides.
- Dresses must not be low cut in the front. Sheer fabric that extends below the neckline is not acceptable.
- Dresses must meet the above requirements without the use of a shawl or jacket.



Appropriate Dresses

Slits on dresses and skirts must be modest and adhere to length requirement





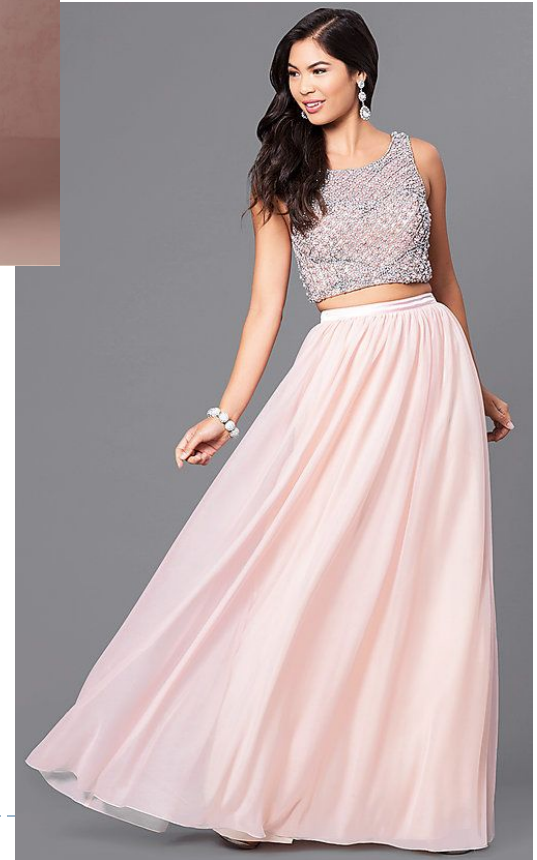


Show your
personal
style!

SHERRI HILL



SHERRI HILL



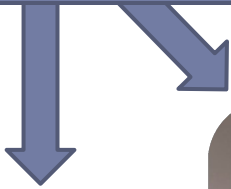


Dress length should be no shorter than 4 inches from the knee.



Inappropriate Dresses

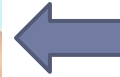
Too short



SHERRI HILL



Too short
& too tight



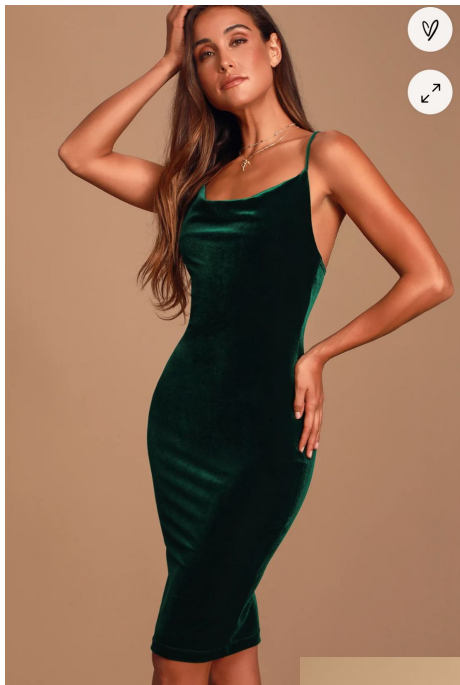
Slip too short



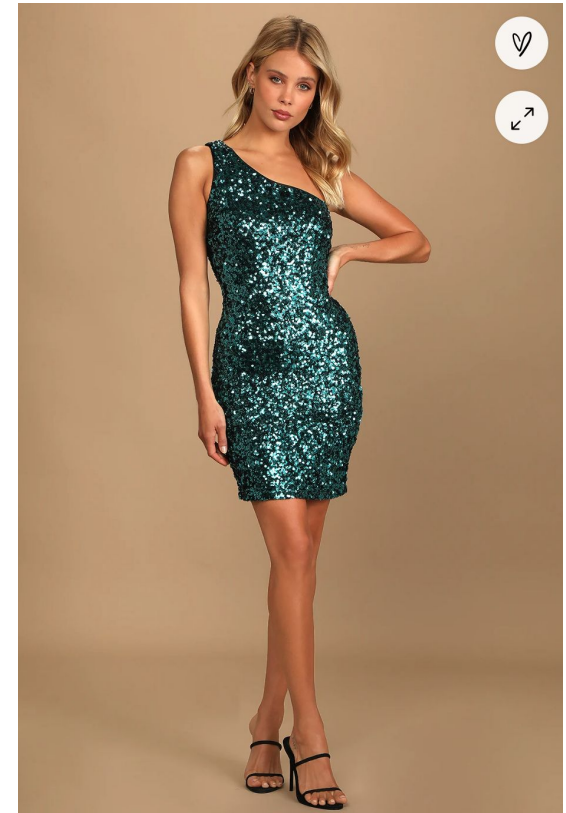


Slits too high
on leg





No body con or
form fitting
dresses





↑
Plunging
Neckline



↑
Plunging
Back
→



Bare midriffs
and sides



Bare sides and
plunging back

Boys Dress Code

□ Homecoming Requirements:

- Dockers or nice slacks
- Button up shirt
- Tie optional
- No jeans, t-shirts, flannels or shorts

□ Prom Requirements:

- Suit or Tuxedo
- Button up shirt
- Tie required
- Dress shoes
- No jeans, t-shirts, flannels or shorts

